

Ed Visioning Group WORKSHOP Two

July 20, 2023



MANCHESTER SCHOOL DISTRICT



ENVISIONING THE MSD MASTER PLAN



SMMA

 newvistadesign

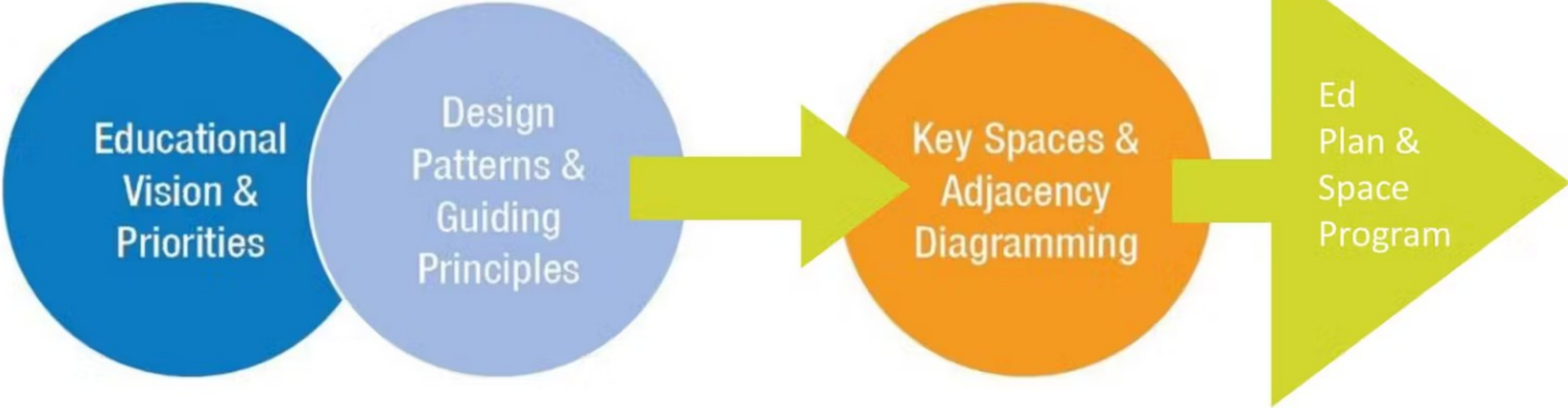
Agenda



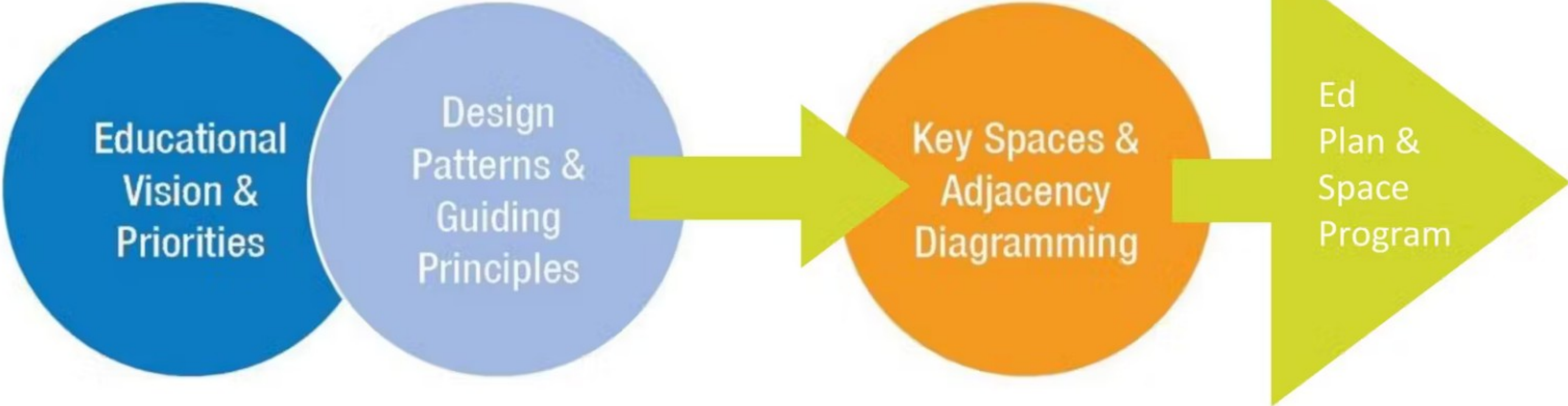
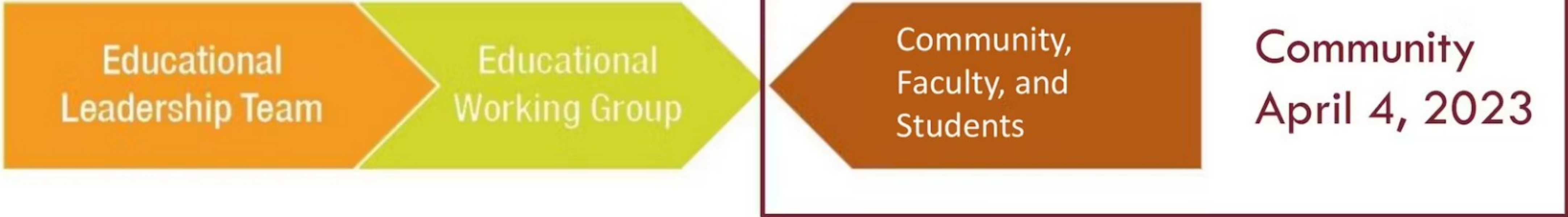
MANCHESTER SCHOOL DISTRICT

1. Design Pattern *Review (15 min) 5:00 - 5:15*
2. Design Patterns Prioritization *Small Group Activity (35 min) 5:15 – 5:50*
BREAK 5:50 – 6:00
3. Guiding Principles *Small Group Activity (45 min) 6:00 – 6:45*
4. Blue Sky Ideas *Activity (15 minutes) 6:45 – 7:00*
BREAK 7:00 – 7:10
5. Bubble Diagramming *Small Group Activity (40 min) 7:10 – 7:50*
6. Q&A and Next Steps *(35 min) 7:50 – 8:00*

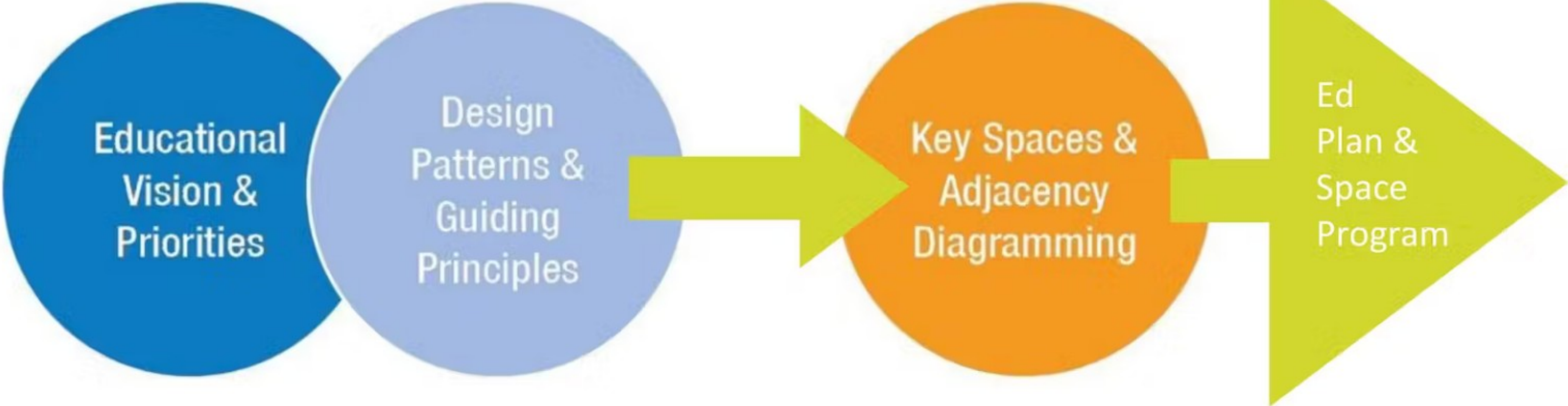
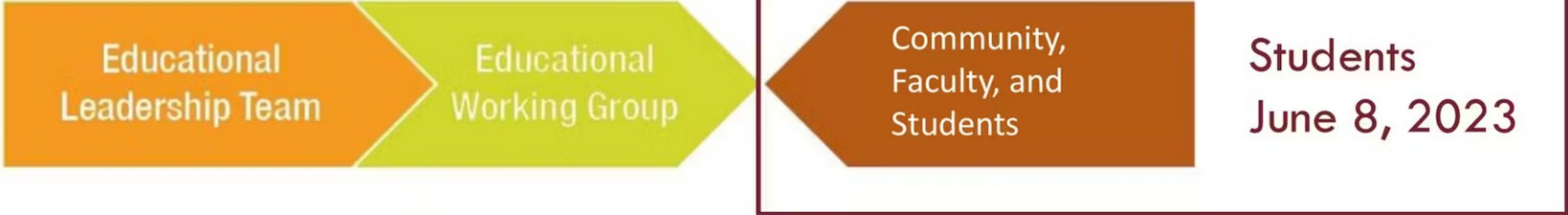
The Visioning Process



The Visioning Process



The Visioning Process



The Visioning Process — Visioning Group



Developing a Narrative

- Educational vision as connected to design priorities and goals
- Desired spaces and adjacencies
- Optimization of existing, renovated, and new facilities
- Connections to Community Plan and Strategic Plan



Workshop One Notes



Who We Are

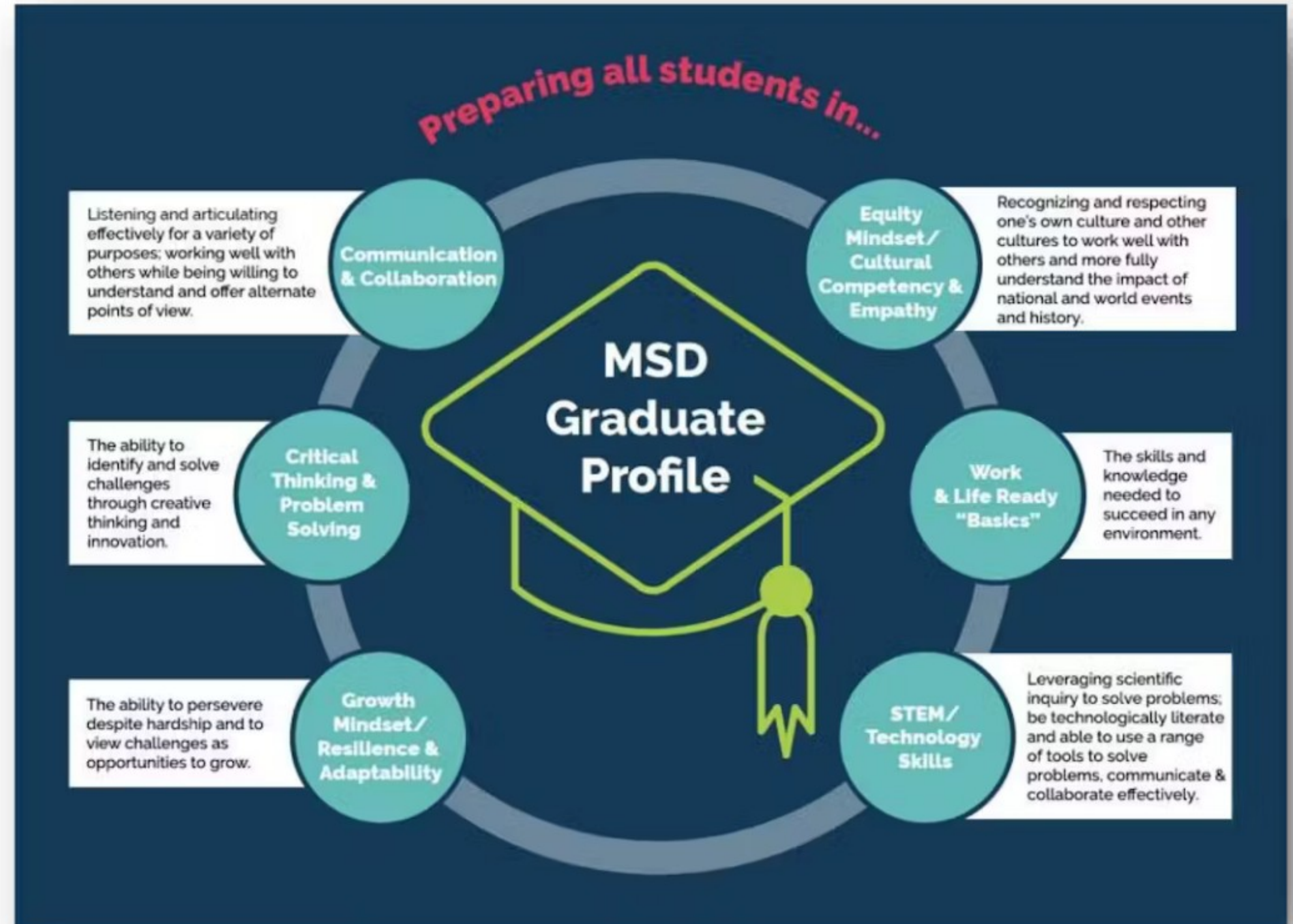
- Administrators
- Teachers
- Parents
- Students
- Community Members
-
- Elementary Schools
- Middle School
- High School

Bubble Diagramming Groups

- **Group 1** Elementary School Adjacencies
- **Group 2** Middle School Adjacencies
- **Group 3** High School Adjacencies

Implications of MSD Graduate Profile

- Programmatic
- Architectural



Implications of MSD Graduate Profile

Better Understanding the Profile of a Graduate

- Need to get teachers to buy into the MSD Graduate Profile
- Which of the traits are the core/foundation of the graduate profile?

Early Exposure to Profile of a Graduate

- These traits need to be originated in kindergarten to provide a well-rounded base for students as they grow

Equity and Access

- Equity focus is critical to the entire effort. It builds an acceptance/empathy in students that is key for the Manchester community

Professional Development

- Teachers don't have the training. We need more cross collaboration. A lot of teachers want to do more but don't have as much opportunity- need district support and coordination

Work and Life Ready Basics

- Work/life ready basics are important and critical for students' futures. Needs more depth/description, and should incorporate rigor beyond basic exposure

Career Tech Education (CTE)

- Innovation needs to be beyond college engineering, but trade schools. Starting younger than high school. Even include the communities- local businesses

Need for Flexible Pathways

- Central- students say they don't go to school because they feel they need to work (economics)

Growth Mindset

- Growth mindset may be the most foundational for all of the Graduate Profile traits

Implications of MSD Graduate Profile

Critical Thinking

- Critical Thinking and Problem Solving connects to Growth Mindset/ Resilience & Adaptability

STEAM and Project-Based Learning

- Need to incorporate STEAM and not just STEM. Arts needs to be reincorporated.

Student Engagement and Agency

- We need to encourage students to come to school- engage students and make them excited. Get students to stay in school

Personalization

- Advisory periods - this could be where students could be taught about growth mindset/ resilience and adaptability

School Schedule

- Daily schedule - can everything be taught in a 7-period day? Scheduling needs to change

English Language Learning

- For EL, students need to see themselves reflected in the curriculum and school

Leadership and Collaboration

- Communication and Collaboration - Ability to communicate well especially, is huge.
- Opportunities for leadership and ownership

Teacher Teaming

- For middle schools - when space is designed to be conducive to teaming and cross-curricular work, it provides a lot. It would be great for Hillside, Parkside, and Southside to have teaming areas

Implications of MSD Graduate Profile

Small Learning Communities

- For it all to work, it needs to be a school within a school and not separate departments

Robust Technology

- Focus on connectivity and technology and state of the art technology ... having a plan and budget in place to continuously upgrade
- STEM/Technology Skills - require new facilities and technology

A Place Students Want to Be

- Aesthetically pleasing is important- current students say they would go to the cafeteria if it was a 'nice' space

Healthy and Sustainable Facilities

- Need good lighting- current schools are dark
- No students should have to be in a classroom without a window. For aesthetics and mental health
- We should consider schools having their own kitchens

Instructions



What strikes you about this list of programmatic and design implications? What is missing?

8 Responses

Seems to be a student focused list

Personalization

Interdependence in addition to leadership
and collaboration

A very ambitious list! While all are needed,
can we begin with a few anybody to ensure
success? Hey Siri.

Strikes Me- BAM - Equity and Access,
Profile of a Graduate, CTE, Healthy and
Sustainable Facilities

Maybe one thing missing is how some of
these are interconnected

Goal setting and attainment, but that could
go under critical thinking

Equitable



MANCHESTER SCHOOL DISTRICT

Design

Patterns

Rate Every Slide



LOVE IT!



GREAT IDEA



NOT SO MUCH



MAYBE

Top 18 Design Patterns

1. **Enrichment Spaces** (25 votes)
2. **Varied Performance Venues** (23 votes)
3. **Media Center Learning Commons** (22 votes)
4. **Safe Community Use and Access** (22 votes)
5. **Collaborative Spaces** (22 votes)
6. **Breakout Spaces** (22 votes)
7. **Safety and Security** (20 votes)
8. **Extended Learning Areas** (20 votes)
9. **Wayfinding and Streetscapes** (20 votes)
10. **Display and Exhibition** (21 votes)
11. **Natural Light** (19 votes)
12. **Outdoor Learning and Play** (19 votes)
13. **Professional Work Areas** (19 votes)
14. **Good Storage/Cubbies** (19 votes)
15. **Agile Classrooms** (18 votes)
16. **Maker Classrooms and Makerspaces** (18 votes)
17. **Nooks, Caves, and Quiet Spaces** (18 votes)
18. **Welcoming Arrival and Drop-Off** (18 votes)



New School Design Patterns

Enrichment Spaces



New School Design Patterns

Varied Performance Venues



New School Design Patterns

Media Center Learning Commons



New School Design Patterns

Safe Community Use and Access



New School Design Patterns

Collaborative Spaces



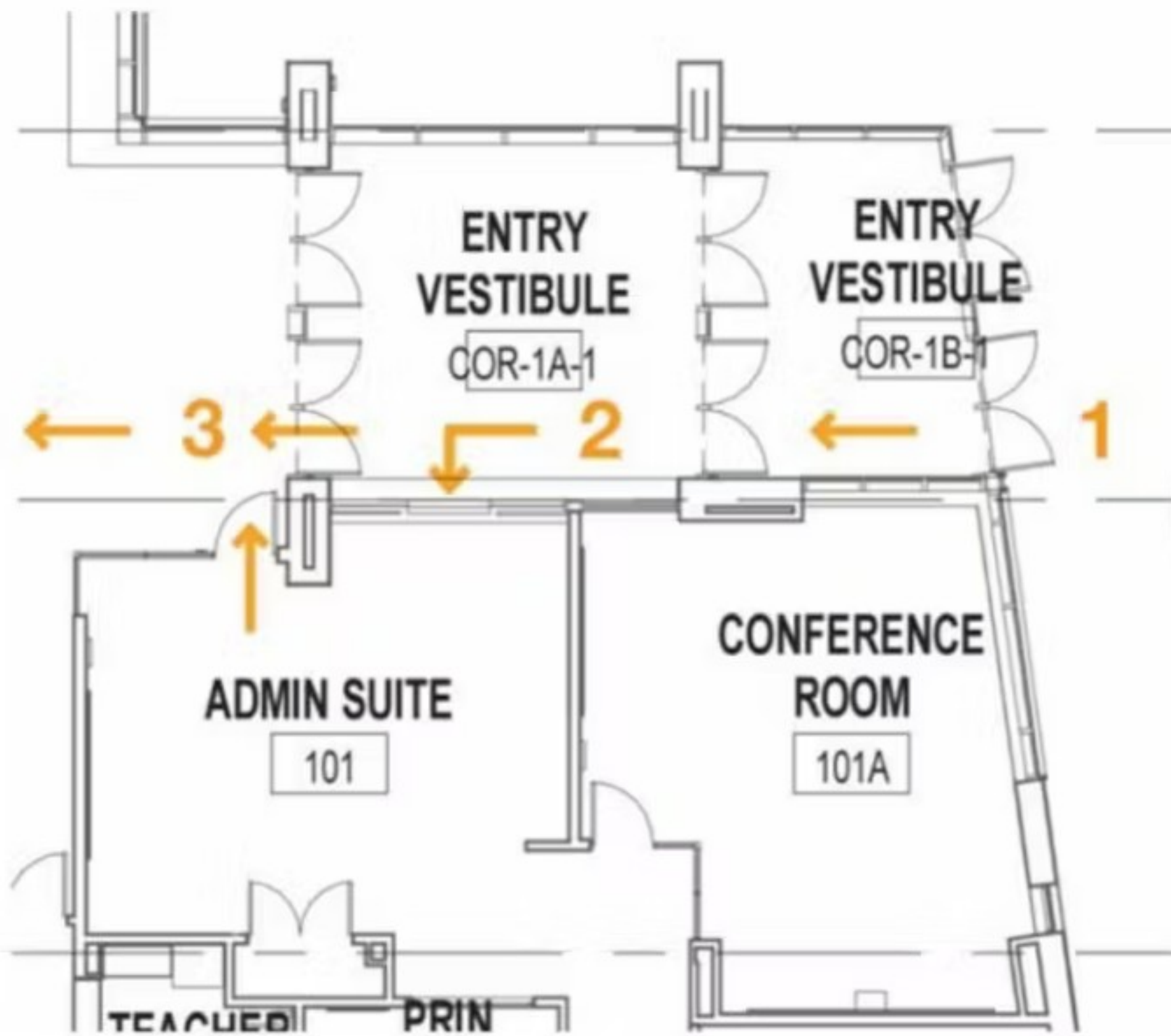
New School Design Patterns

Break Out Spaces



New School Design Patterns

Safety and Security



GLOBAL PRINCIPLES

TOP STRATEGIES FROM GLOBAL CONVERSATION

- **Visibility / Transparency / connectedness – strategic approach**
- **Single point of entry**
- **Welcoming / not prison feel**
- **Process of design / align with policy / align with first responders**
- **Pride of ownership / define public and private**
- **Social / emotional connectedness**
- **Layers of access control / visibility – cameras/ authorized access**
- **Feeling of safety**
- **Diversity of learning spaces**
- **Integrated communication plan**
- **Education around safety and security policy / features**
- **Place within the classroom that provides a sense of safety**
- **Design safety through architecture**

New School Design Patterns

Extended Learning Spaces



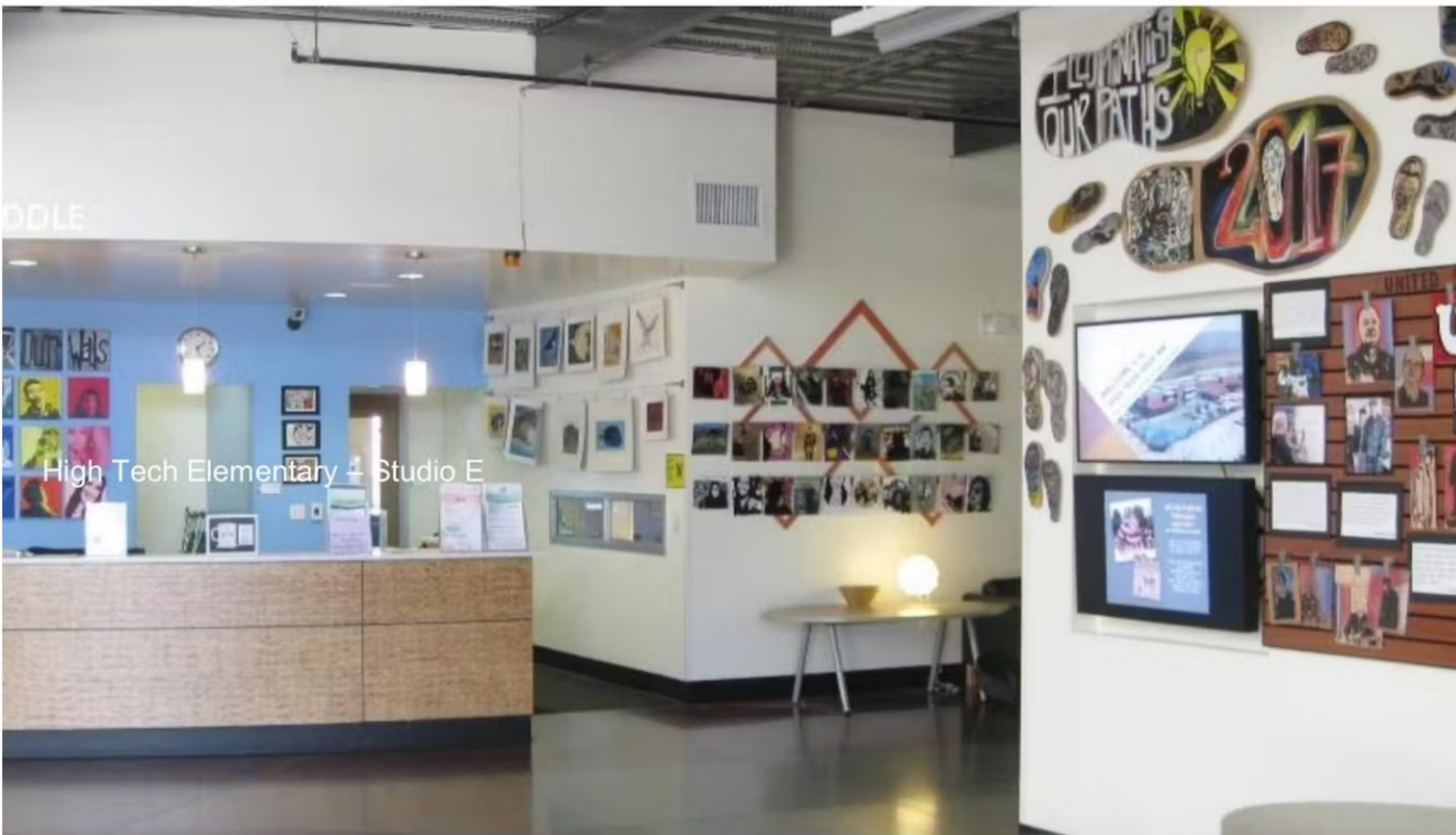
New School Design Patterns

Wayfinding and Streetscapes



New School Design Patterns

Display and Exhibition



New School Design Patterns

Natural Light



New School Design Patterns

Outdoor Play and Learning



New School Design Patterns

Professional Work Areas



New School Design Patterns

Good Storage/Cubbies



New School Design Patterns

Agile Classrooms



New School Design Patterns

Maker Classrooms and Maker Spaces



New School Design Patterns

Nooks, Caves and Quiet Spaces



New School Design Patterns

Welcoming Arrival Safe Drop-off/Pick-up



Next 6 Design Patterns

- 19. Career Tech Spaces (17 votes)
- 20. Sustainability (17 votes)
- 21. Heart of School (15 votes)
- 22. Classroom Neighborhoods (15 votes)
- 23. Push-In Special Education (15 votes)
- 24. Building as Teacher (14 votes)



New School Design Patterns

Career Tech Spaces



New School Design Patterns

Sustainability/ Building as Teacher



Recycling

Did you know? The City of Cambridge uses single-stream recycling, which means you can mix clean bottles, cans, paper, and cardboard in the same bin. This material will be recycled using a variety of machines. Conveyors, separating discs, and magnets will help to separate Cambridge's single stream of materials into separate streams of glass, cardboard, paper, and metal.



Supply Air Ducts

LOOK UP! The purple ducts are bringing you air! A network of these ducts "supply" air into each room of the school. Whether it's a warm day or a cool one, the geothermal system helps heat pumps near each classroom heat or cool the outside air. By the time this air reaches you, it's exactly the right temperature.



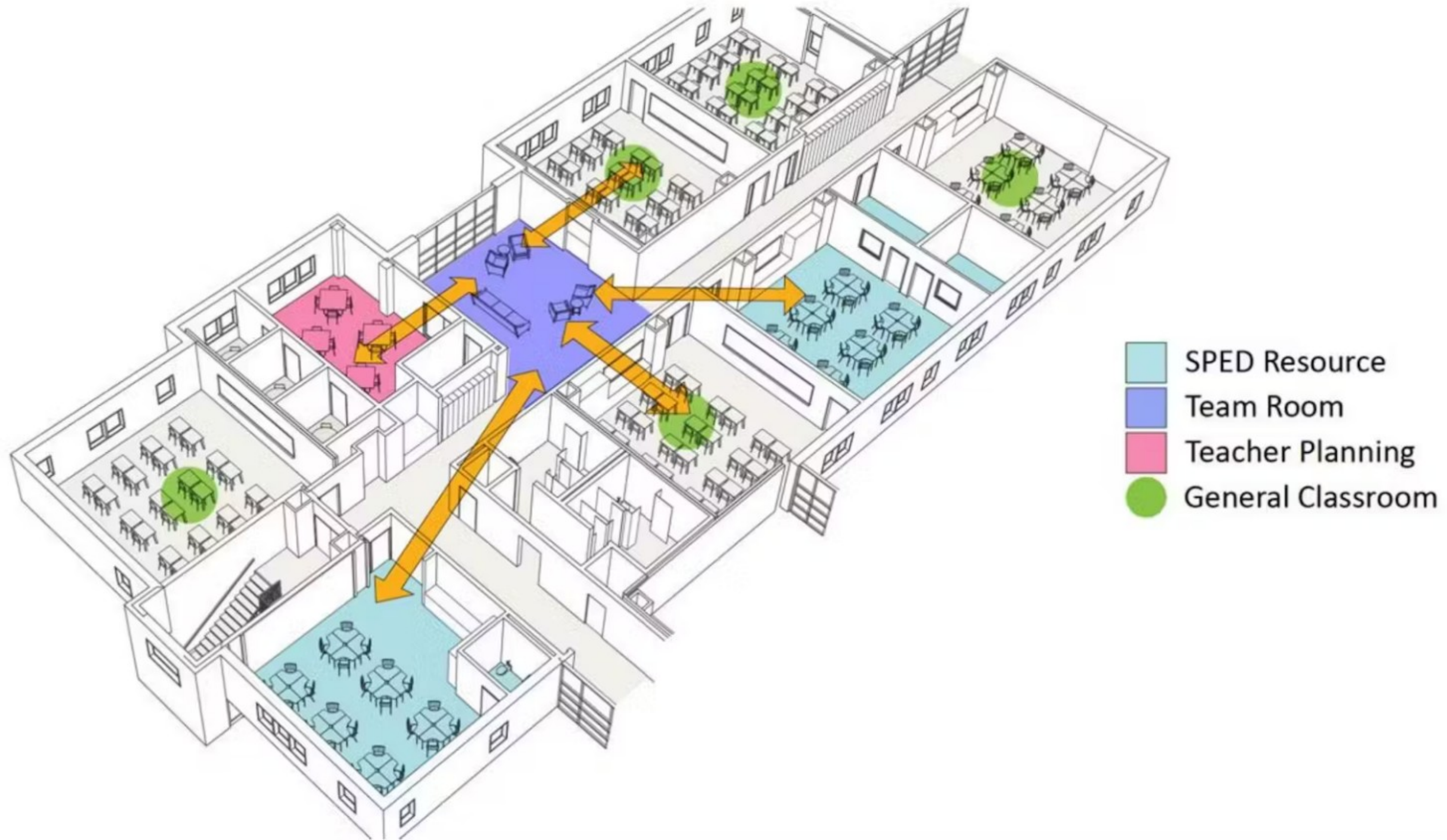
New School Design Patterns

Heart of the School



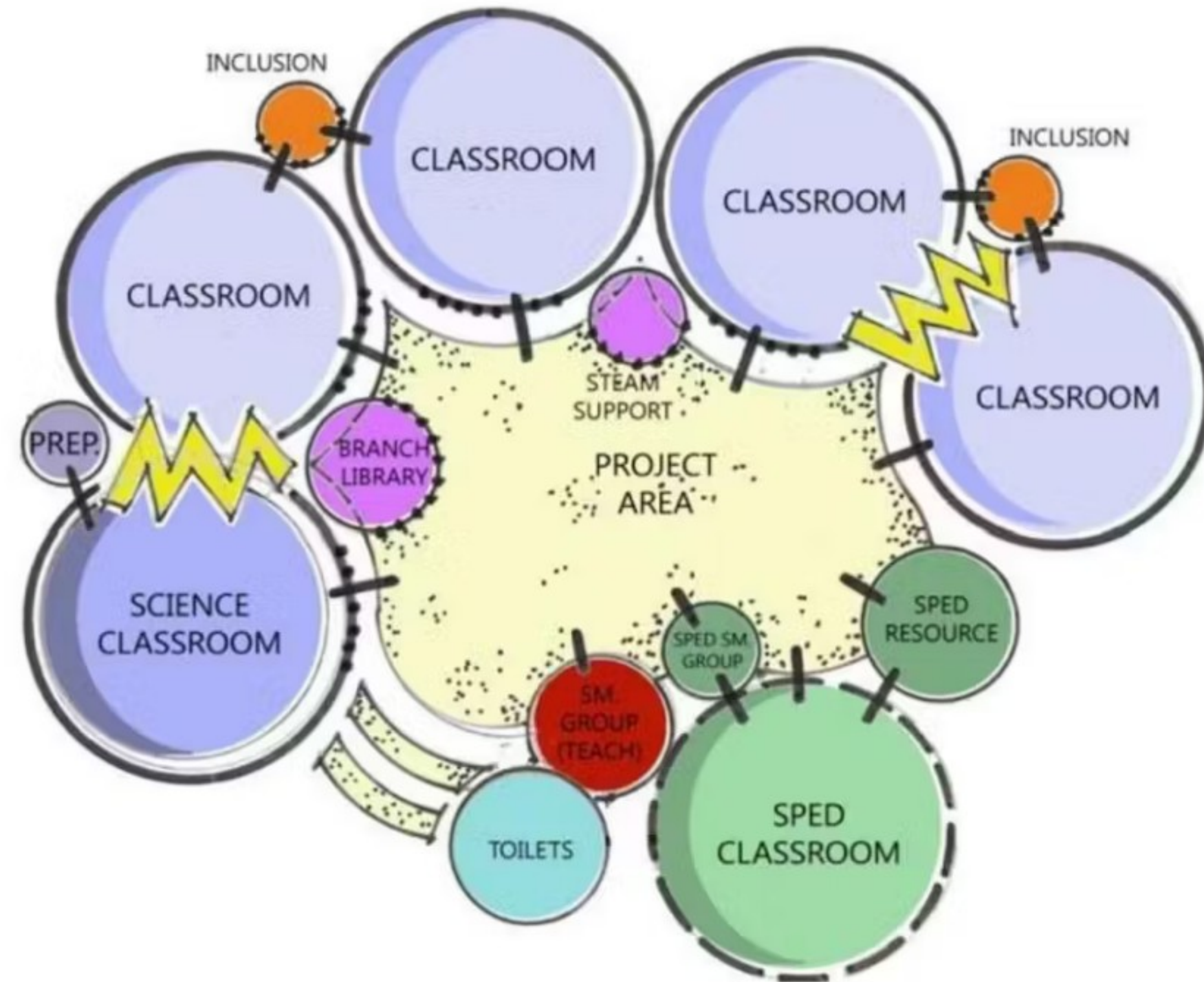
New School Design Patterns

Classroom Neighborhoods



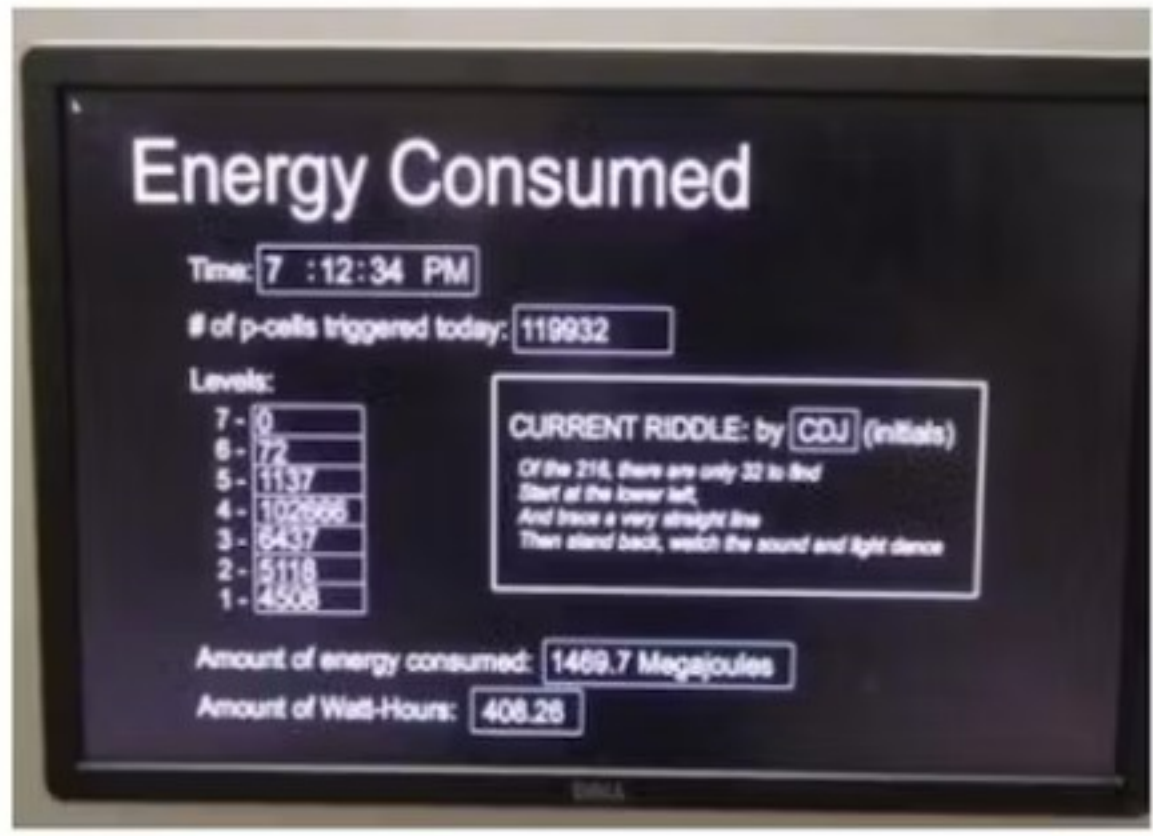
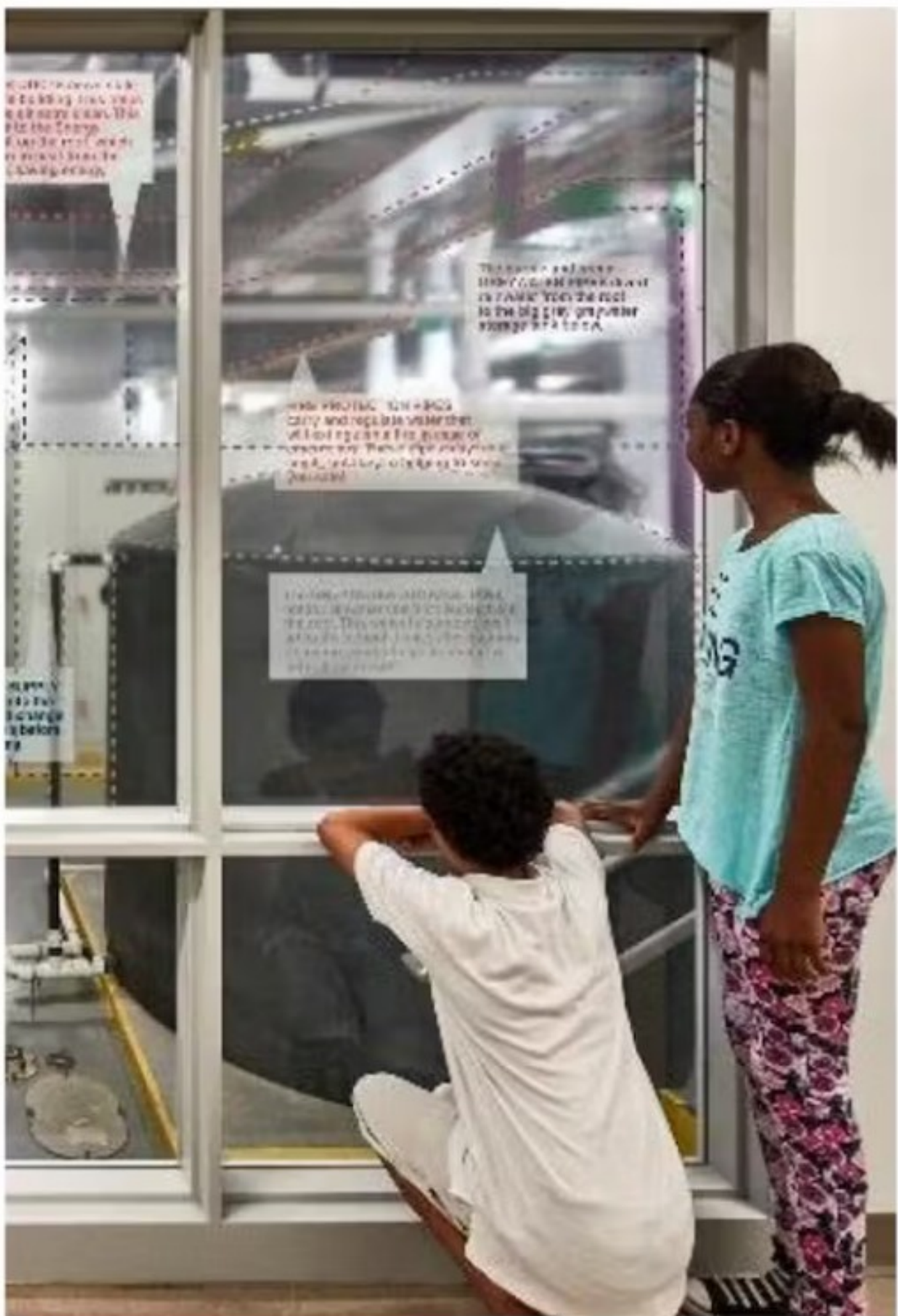
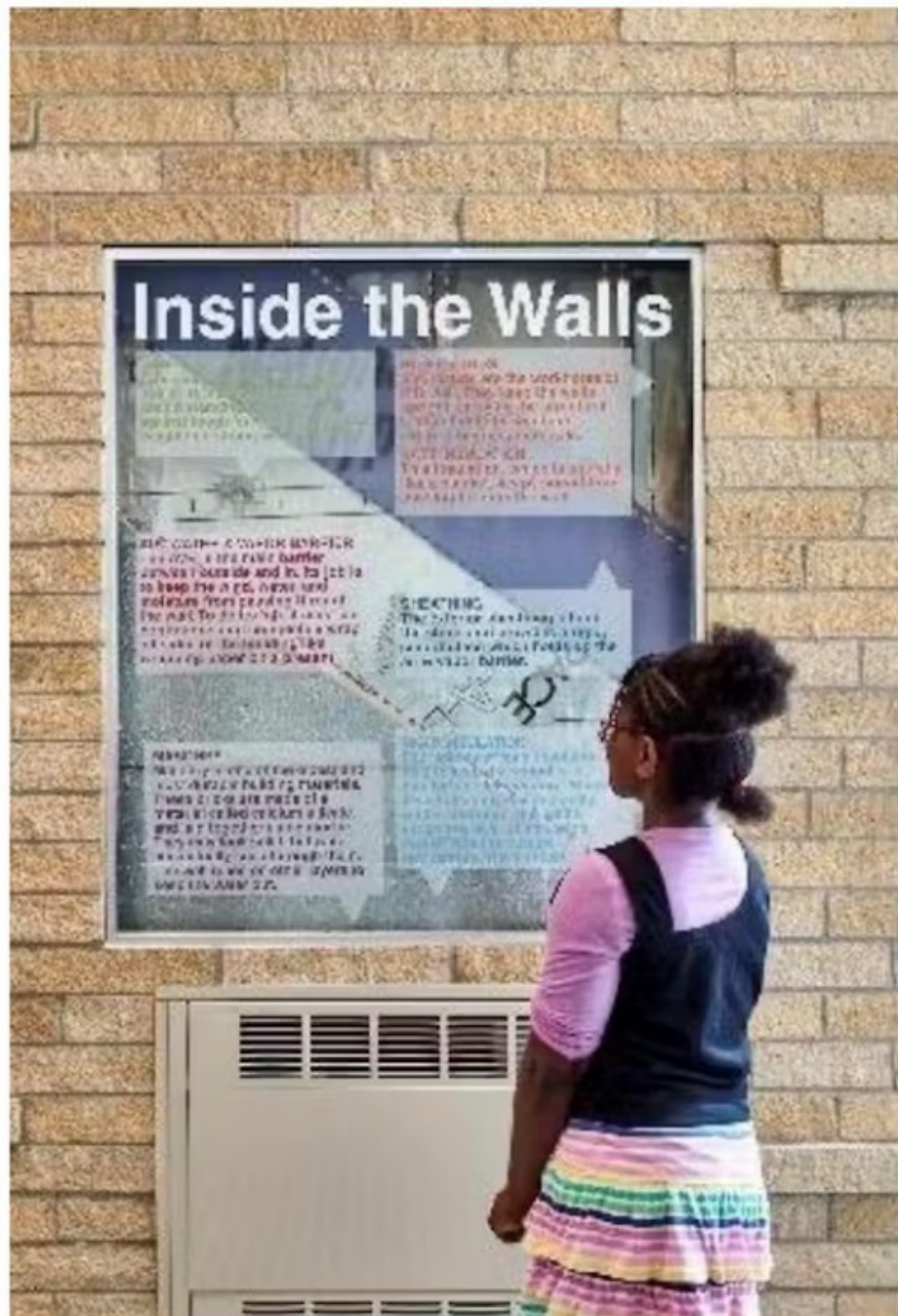
New School Design Patterns

Push-In Special Education



New School Design Patterns

Building as Teacher



Small Group Design Pattern Prioritization

- Individually review the listing of priority design patterns (10 min)
- Share your priority patterns, then make a collective list of the top 8-10 patterns. Feel free to combine patterns, and make up your own (20 min)
- Add bullet points to the group's top 4 design patterns to describe what they specifically mean to you with regard to design features and approaches for the MSD K-12 Schools (5 min)